

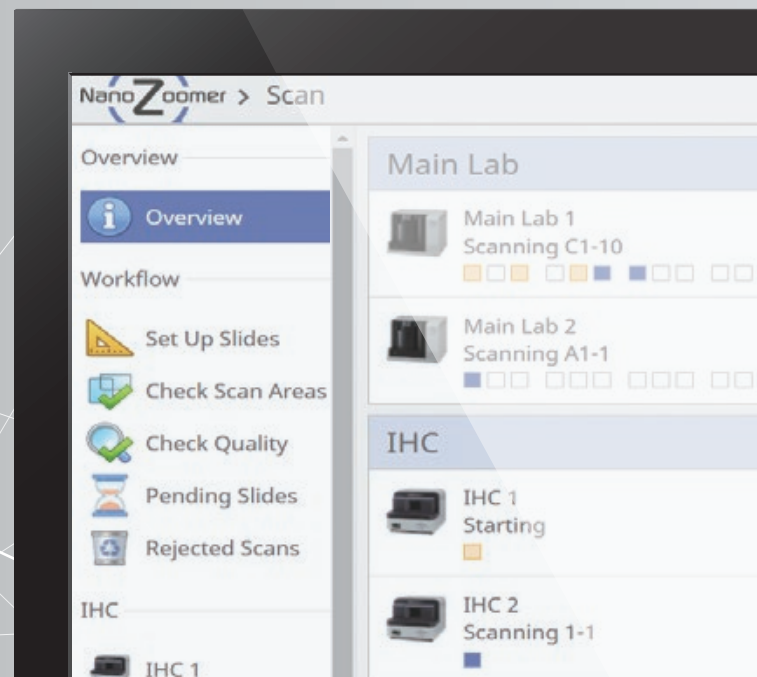
RUO model

NZConnect Scan

Image acquisition server software

U16414-01

Connected, scalable NanoZoomer® series management software



Control
NanoZoomer series

Control and monitor multiple scanners
via a unified web-interface.

Remote operation

Operate remotely and check scanner status
from any location.

Audit trail

Manage and trace event logs for individual slides and users.

Online
Quality check

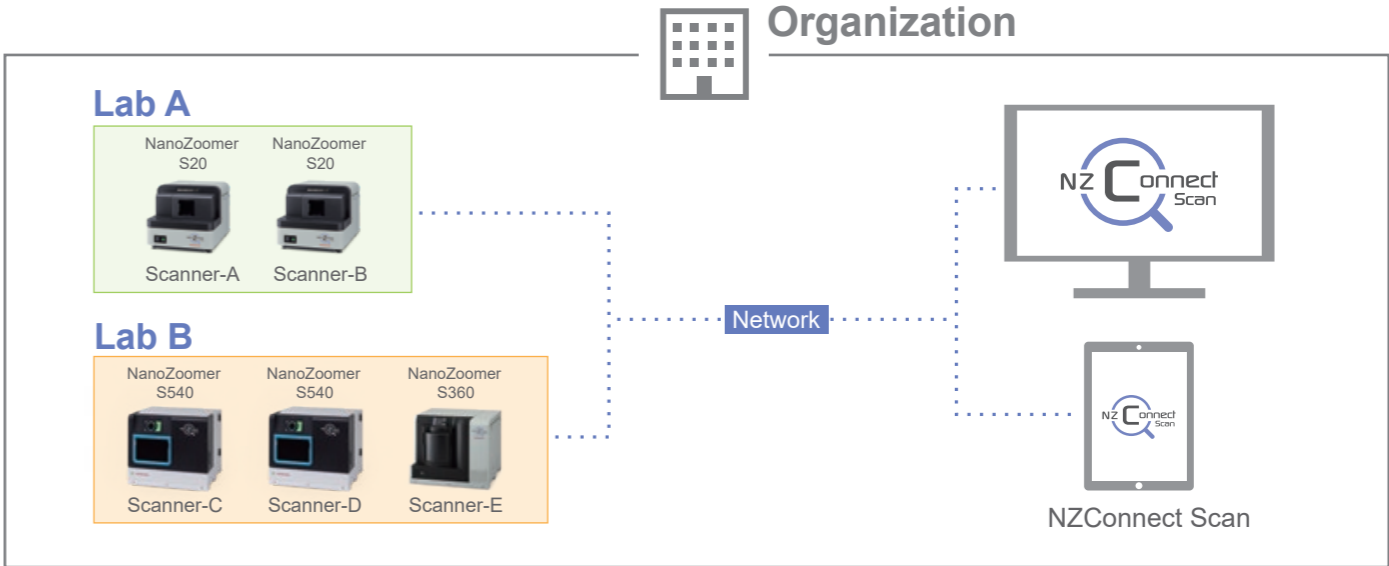
Perform remote QC, anywhere, anytime.

Barcode control

Automatically select scan settings based on barcode information.

Optimizing your workflow with centralized scanner management

NZConnect Scan allows seamless management and operation of NanoZoomer series (S540, S360, and S20) from any authorized users on a networked computer. As a web-based application, it supports simultaneous access by multiple users across the network, ensuring efficient collaboration and streamlined workflows. With an integrated audit trail for enhanced traceability, NZConnect Scan delivers advanced control and oversight, setting a new standard for scanner management.



*The NanoZoomer S540 and S360 are designed for use with a dedicated cart. Images above shown without the dedicated cart.

User	Slide loading	Scan operation	Quality check	Observation
Scan technologist	• Slide loading	• Scan operation	• Status check (Blank slot check / scanning)	• Quality check
Pathologist				• Observation
Lab manager	• Audit trail	• Status check (Entire workflow)		
Administrator	• Server admin	• User management		

Barcode driven workflow

- Automatically select scan profiles based on slide barcode.
- Scanned barcode data is shared between scanners.
- Flexibly route slide images to any network destination.

Auto/Manual remote scanning

- Freely mix slides for scanning in semi-automatic and fully-automatic modes.
- Maintain control of scan settings in automated workflows, with the ability to adjust pre-applied settings.

Quality check management

- Easily locate slides by scanning their barcode with a hand-held reader.
- Use automated QC to check slides needing attention, with customizable focus score thresholds.
- Use area check function to confirm scan areas on multiple slides at once.

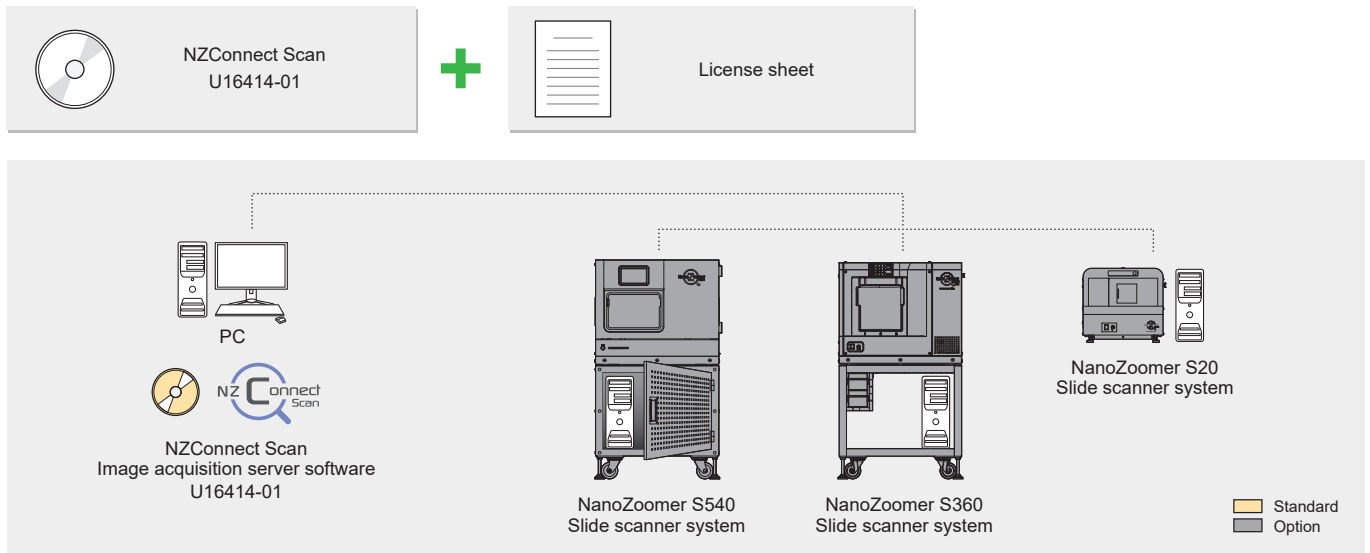
Audit trail

Enhanced transparency of scanner activity, ensuring a clear record of key workflow steps. Track which slides were scanned, who performed QC checks, and when slides were accessed - all linked to secure user logins. Customizable filters allow tailored views of specific actions within set timeframes, with export options available to support IT security and governance. By enhancing traceability and secure user authentication, these capabilities contribute to meeting GLP standards in laboratory operations.

Web-based image management

- Seamless integration into NZConnect Serve for simple image viewing.
- Key features of NZConnect Serve include an intuitive interface, simple data management, synchronized viewing, LDAP support.

System configuration



System requirements

Product name	NZConnect Scan Image acquisition server software
Product number	U16414-01
Type of computer	PC-AT compatibles, Infrastructure as a Service
OS	Windows® Server 2025, Windows Server 2022, Windows Server 2019, Windows Server 2016
CPU	Xeon 4 Core or more
Memory	16 GB or more
Available HDD space	50 GB or more
Drive	DVD-ROM Drive
Screen resolution	1024 × 768 or higher
Database management system	Microsoft SQL Server 2016 Express with Advanced Services / Standard (64 bit) Microsoft SQL Server 2017 Express with Advanced Services / Standard (64 bit) Microsoft SQL Server 2019 Express with Advanced Services / Standard (64 bit) Microsoft SQL Server 2022 Express with Advanced Services / Standard (64 bit)

Operating environment

Compatible devices	Compatible OS	Supported browser
Windows PC	Windows 10 Including Touch panel	Microsoft Edge, Google Chrome, Mozilla Firefox
	Windows 11	
	Windows server 2025	
	Windows server 2022	
	Windows server 2019	
Mac	macOS 26.x Tahoe	Safari Ver. 26
	macOS 15.x Sequoia	Safari Ver. 18
iPad	iPadOS Ver. 26	Safari Ver. 26
	iPadOS Ver. 18	Safari Ver. 18

- NanoZoomer is a registered trademark of Hamamatsu Photonics K.K. (EU, Japan, UK, USA).
- Windows is a registered trademark of Microsoft Corporation in the USA.
- The product and software package names noted in this brochure are trademarks or registered trademarks of their respective manufacturers.
- Subject to local technical requirements and regulations, availability of products included in this brochure may vary. Please consult your local sales representative.
- The product described in this brochure is designed to meet the written specifications, when used strictly in accordance with all instructions.
- The products in this brochure are not medical devices.
- Specifications and external appearance are subject to change without notice.

©2026 Hamamatsu Photonics K.K.